

DACC's Electrical Lineworker Program trains students to be advanced apprentices at New Mexico rural electric cooperatives and other utility companies that build and maintain electrical transmission and distribution lines.



Industry Partners include:



**CONTINENTAL DIVIDE
ELECTRIC COOPERATIVE, INC.**

A Touchstone Energy® Cooperative 

For employment
and scholarships through
Continental Divide Electric
Co-op, call Corina Sandoval
at (505) 285-6656.

Get Started Today!

Apply for admissions at
<http://dacc.nmsu.edu/admissions/>
Or call (575) 527-7710

Apply for financial aid at
<http://fafsa.ed.gov>
<http://dacc.nmsu.edu/SS/FinAid/>
Or call (575) 527-7696

Arrange for housing at
<http://nmsu.edu/~housing/>
Or call (575) 646-3202



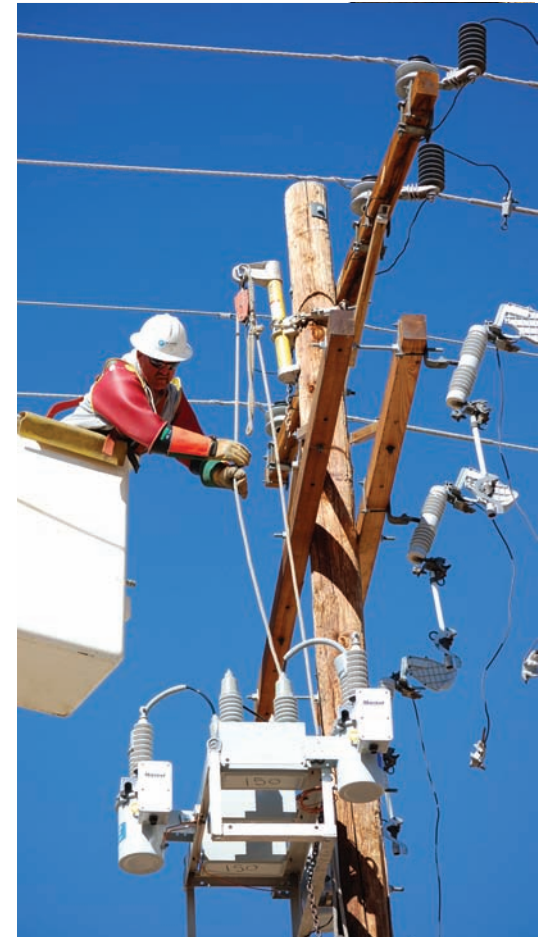
NMSU
Dona Ana Community College

PO Box 30001, MSC 3DA
(3400 South Espina Street)
Las Cruces, NM 88003-8001
<http://dacc.nmsu.edu>

Phone: 575-528-7242
Fax: 575-527-7774
E-mail: karias@nmsu.edu

ELECTRICAL LINEWORKER

Certificate of Completion



Where students come first!



ELECTRICAL LINeworker CERTIFICATE PROGRAM

What do lineworkers do?

- Install and maintain power lines.
- Erect utility poles and towers using digger derricks, trenchers, cable plows, and borers.
- String cable along poles and towers or through tunnels and trenches.
- Use truck-mounted buckets or climb poles to maintain and repair cables.

What is the work environment like?

- Lineworkers work outside in all kinds of weather.
- Involves climbing and balancing on high towers and poles and working with high voltage power.
- Strict safety procedures are practiced daily.

Will I be able to get a job, and how much does it pay?

- Some students get hired where they did their internship.
- All of the students, so far, who completed the program successfully and chose work as an electrical lineworker, have been hired!
- Salaries vary, but on average New Mexico lineworkers make about:
 - \$29,000 per year or about \$14 per hour at the entry level.
 - \$50,000 per year or about \$25 per hour as a first-year journeyman.

How do I qualify?

To qualify for training students must meet the following requirements:

- 18 years old.
- High School diploma or GED.
- Current drivers license & **clean driving record**.
- Able to lift up to 100 pounds.
- Able to analyze information & solve problems.
- Demonstrate good eye-hand coordination.
- Able to speak and write clearly in English.

What will it cost?

- **In-State, In-District Tuition per semester**
 - \$62 per credit hour*
 - \$744 full-time (12 - 18 credits)*
- **In-State, Out-of-District per semester**
 - \$74 per credit hour*
 - \$888 full-time (12 - 18 credits)*
- **Out-of-State per semester**
 - \$194 per credit hour*
 - \$2,328 full-time (12 - 18 credits)*
- **Books:** approximately \$400*
- **Commercial Drivers License:** \$250*
- **Boots:** approximately \$300*
- **Hand tools:** approximately \$125*
 - Hammer, 16 oz.
 - Large Screwdriver
 - Adjustable Wrenches, 10- & 12-inch
 - Ratcheting Wrench, 9/16 - 3/4
 - Folding Ruler (wood or fiberglass)
 - Folding Knife

* These costs are estimated and subject to change.

NOTE: Financial Aid is available for qualified candidates

How long will it take?

- About one year.
- Classes and fieldwork begin in August and continue through May.
- Students finish with the summer internship.
- Class A CDL preparation classes are taken in the Fall semester.

Certificate Requirements

Certificate of Completion* (34 Credits)

Fall Semester Classes (16 – 19 Credits)

OEET 110, Basic Electricity & Electronics	4 cr
OEET 130, Introduction to Electrical Power Systems	2 cr
OEET 131, Electrical Lineworker Lab I	6 cr
OECS 105, Introduction to Microcomputer Technology	3 cr
OETS 102, Career Readiness Certification Preparation	1 cr
AUTO 130, Introduction to Transportation (if needed)	3 cr

Spring Semester Classes (12 – 18 credits)

OEET 140, Electrical Power Systems	3 cr
OEET 141, Electrical Lineworker Lab II	6 cr
OETS 118, Basic Math for Technicians	3 cr
AUTO 131, Class A CDL (if needed)	6 cr

Summer Semester Classes (4 credits)

OEET 221, Cooperative Experience	4 cr
----------------------------------	------

*Depending on COMPASS scores students may need to take OETS 104, Basic Math for Technicians in the Fall semester. If students already have a Class A CDL license, the schedule will be adjusted accordingly. **NOTE: It is likely that a student will have more than 18 credits per semester, which is an additional per credit hour charge for each credit over 18. Also, the above schedule is subject to change depending on course availability and student needs.***